

Floating license system installation for DeskArtes Expert Series 8.0 programs



Index

<i>Floating license system installation for DeskArtes Expert Series 8.0 programs.....</i>	<i>1</i>
<i>About this document.....</i>	<i>3</i>
<i>Requirements.....</i>	<i>3</i>
<i>Terminology.....</i>	<i>4</i>
<i>Installing the license server.....</i>	<i>5</i>
<i>Getting the hostid number and hostname for the license.....</i>	<i>7</i>
<i>Installing the license.....</i>	<i>9</i>
<i>Starting the license server.....</i>	<i>10</i>
<i>Checking the license server status.....</i>	<i>11</i>
<i>Shutting down the license server.....</i>	<i>12</i>
<i>Running the license server as a Windows service.....</i>	<i>14</i>
<i>Installing rlm as a Windows service.....</i>	<i>15</i>
<i>Starting rlm service.....</i>	<i>16</i>
<i>Stopping rlm service.....</i>	<i>17</i>
<i>Deleting rlm service.....</i>	<i>18</i>
<i>The rlm license server log file.....</i>	<i>19</i>
<i>Additional information.....</i>	<i>19</i>
<i>Floating license client configuration in 3Data Expert.....</i>	<i>20</i>

About this document

This document explains the operations needed to configure the DeskArtes Expert Series programs to use the Reprise License Manager (RLM) floating license system, instead of the default DeskArtes nodelocked licenses.

The instructions in this document are written for the DeskArtes Expert Series version 8.0 installation packages, containing Reprise RLM version 3 license server and tools.

For further information about the Reprise RLM system you can check the Reprise end user manual at their web-site (http://www.reprisesoftware.com/RLM_Enduser.html).

The document is written using the 3Data Expert as an example, but the same instructions can be applied also for the other DeskArtes Expert Series programs (Dimensions Expert, View Expert and Design Expert).

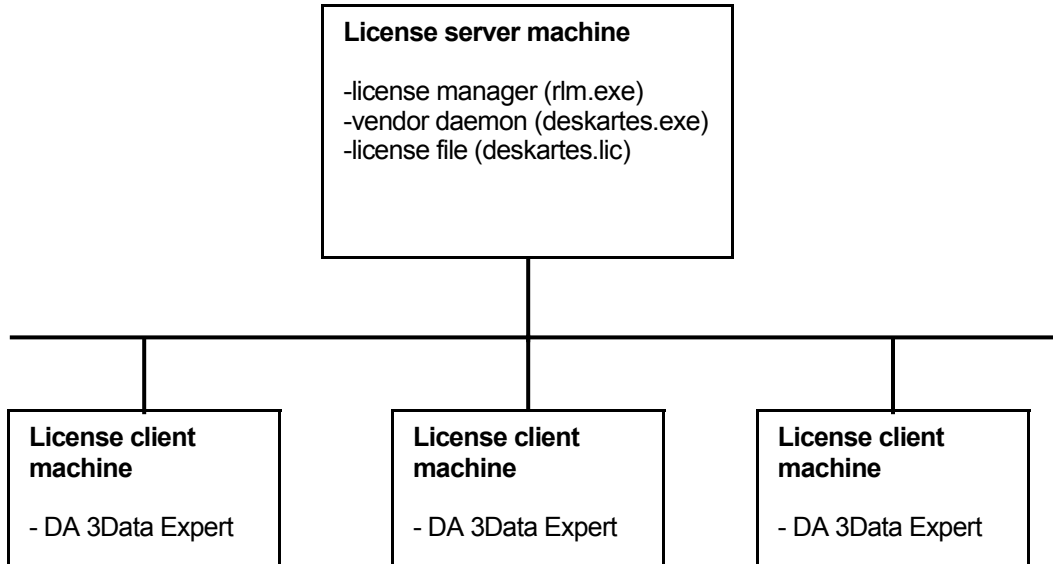
Requirements

The machines running the DeskArtes Expert Series programs with the Reprise RLM floating license system have to be connected to the machine running the license server with a network using the TCP/IP protocol.

The user account doing the installation must have the administrative rights.

Terminology

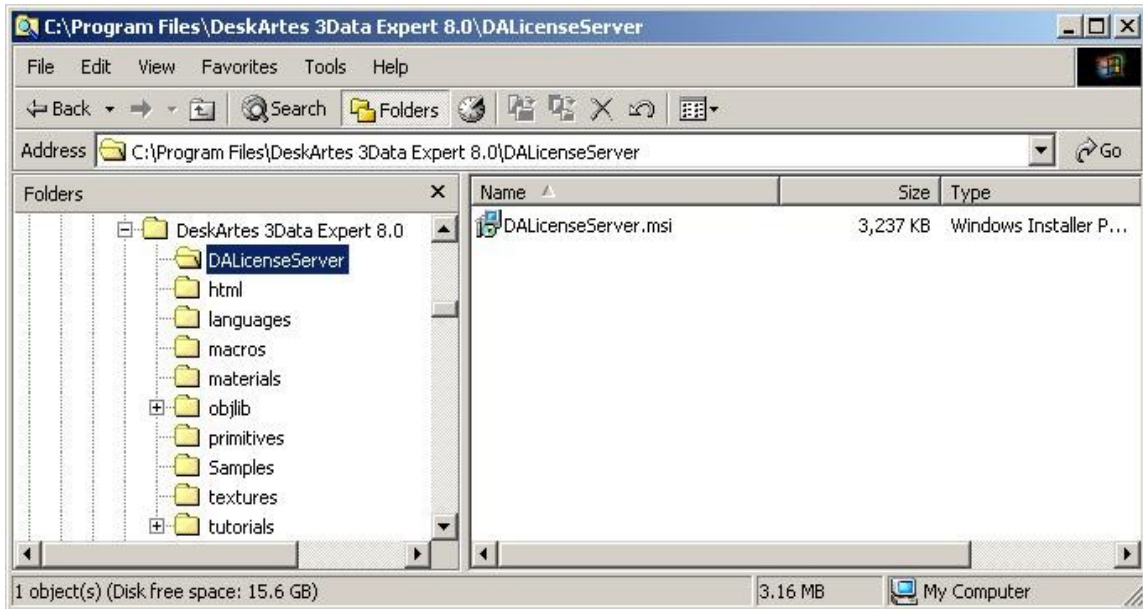
The Reprise RLM floating license system configured for DeskArtes 3Data Expert consists of the parts illustrated in the following figure.



License server machine	The machine where the license manager is running.
License client machine	A machine where DeskArtes 3Data Expert is running, but not the license server.
License manager program	The program (rlm.exe) controlling the license usage in the network, with help of vendor daemons.
License file	A file containing the list of available licenses and vendor daemons.
Vendor daemon program	The program controlling the licenses for the applications of one vendor (deskartes.exe for DeskArtes programs).

Installing the license server

Get the DeskArtes license server installation package (DALicenseServer.msi). It is found in the "DALicenseServer" subdirectory of the 3Data Expert 8.0 installation directory (default: "C:\Program Files\DeskArtes 3Data Expert 8.0\DALicenseServer").



Copy the installation package to the machine that you want to make a license server.

Run the installation package on the license server machine.



If you don't want to install the license server components to the default location, change the path in the "Select Installation Folder" window.

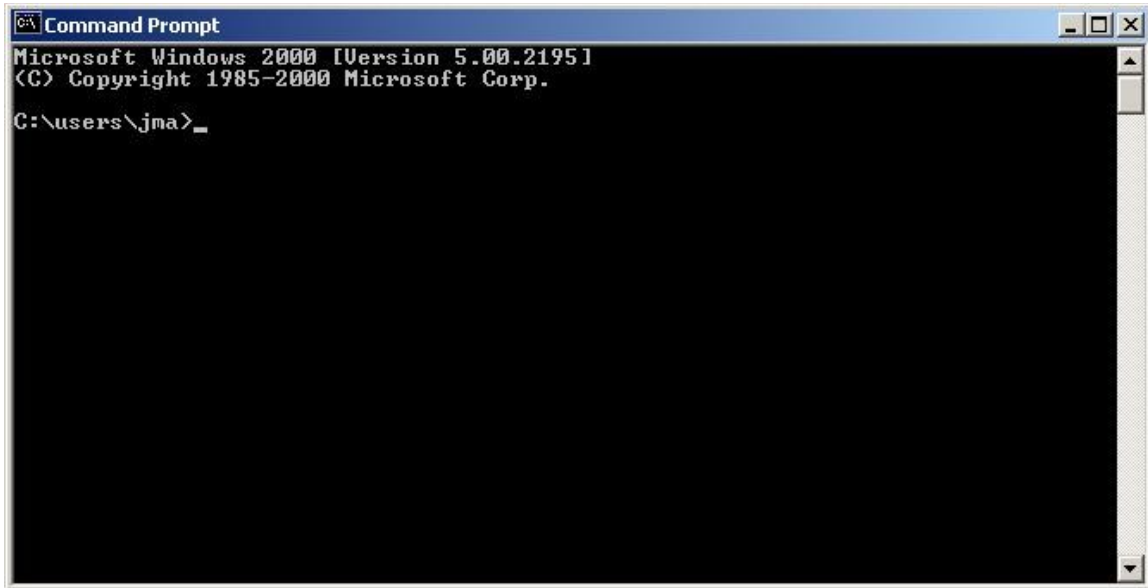


When the installation is complete, just close the last installation window.

Getting the hostid number and hostname for the license

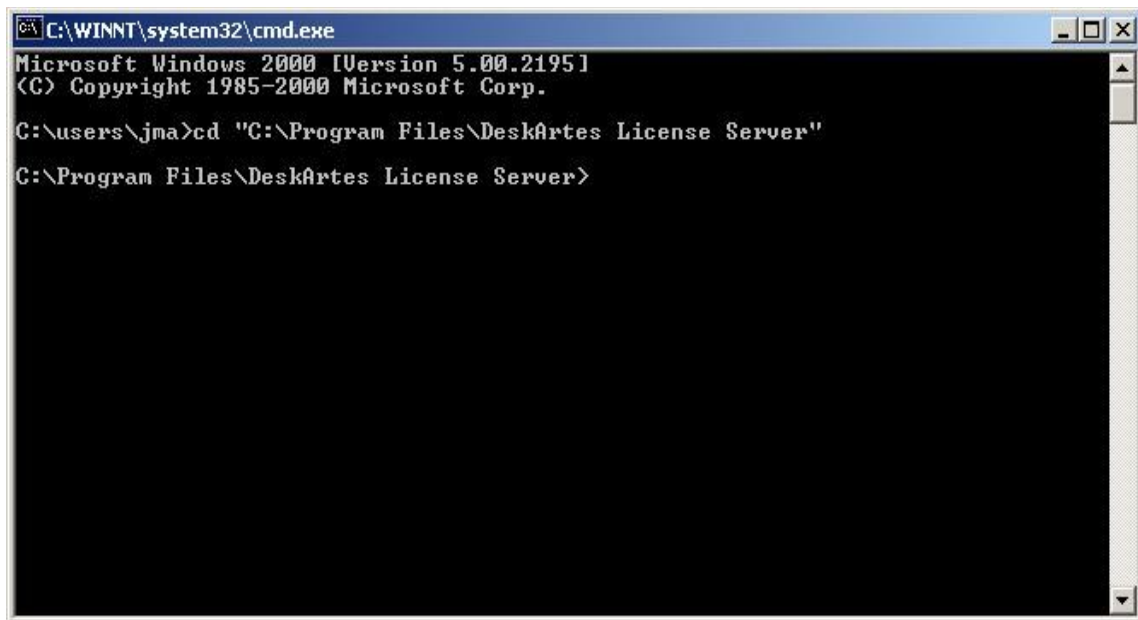
Open a Windows Command Prompt window. The Command Prompt is started from the following Start-menu paths in different Windows versions.

Windows Vista	Start->All Programs->Accessories->Command Prompt
Windows XP	Start->All Programs->Accessories->Command Prompt
Windows 2000	Start->Programs->Accessories->Command Prompt



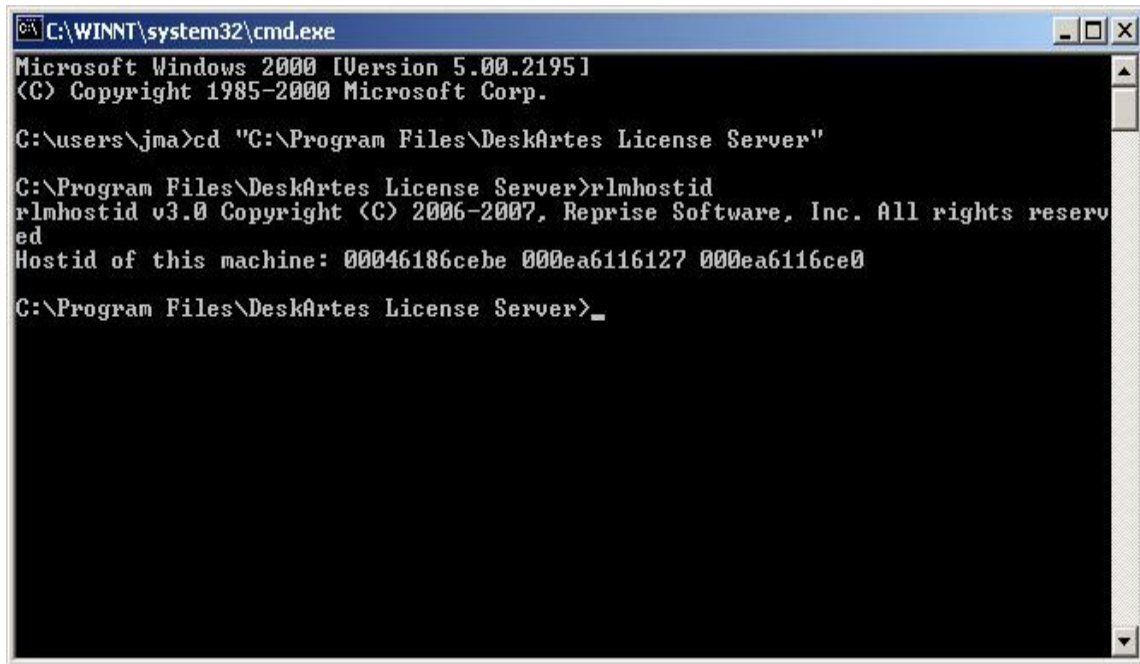
```
Command Prompt
Microsoft Windows 2000 [Version 5.00.2195]
(C) Copyright 1985-2000 Microsoft Corp.
C:\users\jma>_
```

Change current working directory to the license server installation directory (default: "C:\Program Files\DeskArtes License Server") using the "cd" command.



```
C:\WINNT\system32\cmd.exe
Microsoft Windows 2000 [Version 5.00.2195]
(C) Copyright 1985-2000 Microsoft Corp.
C:\users\jma>cd "C:\Program Files\DeskArtes License Server"
C:\Program Files\DeskArtes License Server>
```

Run the command "rlmhostid" to get the hostid number for creating the license.



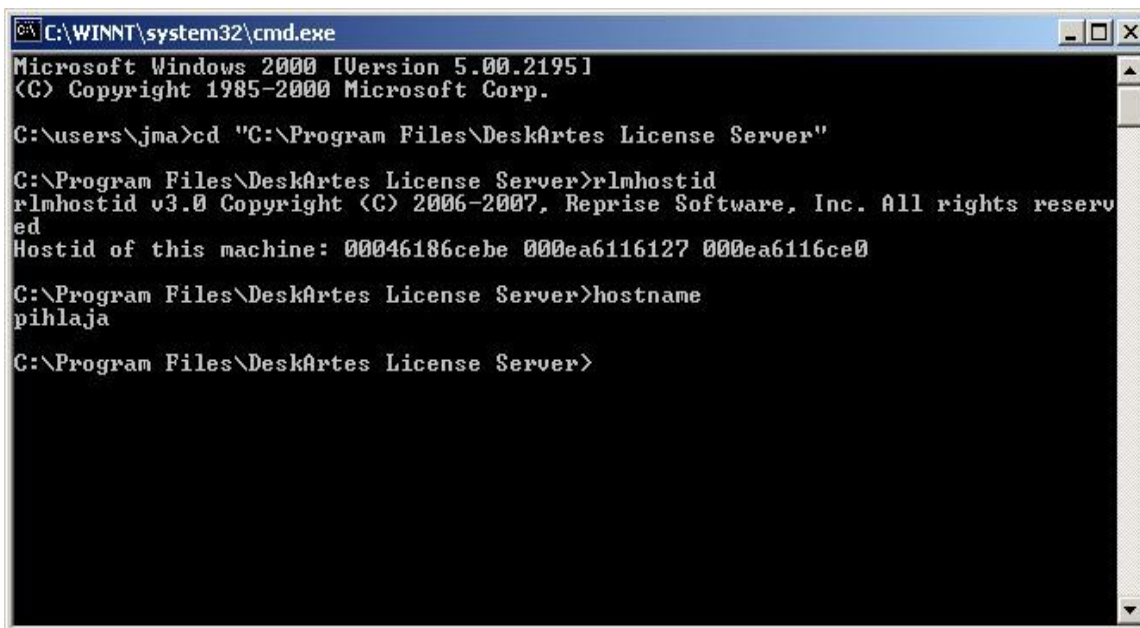
```
C:\WINNT\system32\cmd.exe
Microsoft Windows 2000 [Version 5.00.2195]
(C) Copyright 1985-2000 Microsoft Corp.

C:\users\jma>cd "C:\Program Files\DeskArtes License Server"

C:\Program Files\DeskArtes License Server>rlmhostid
rlmhostid v3.0 Copyright (C) 2006-2007, Reprise Software, Inc. All rights reserved
Hostid of this machine: 00046186cebe 000ea6116127 000ea6116ce0

C:\Program Files\DeskArtes License Server>_
```

Run the command "hostname" to get the hostname of the license server machine.



```
C:\WINNT\system32\cmd.exe
Microsoft Windows 2000 [Version 5.00.2195]
(C) Copyright 1985-2000 Microsoft Corp.

C:\users\jma>cd "C:\Program Files\DeskArtes License Server"

C:\Program Files\DeskArtes License Server>rlmhostid
rlmhostid v3.0 Copyright (C) 2006-2007, Reprise Software, Inc. All rights reserved
Hostid of this machine: 00046186cebe 000ea6116127 000ea6116ce0

C:\Program Files\DeskArtes License Server>hostname
pihlaja

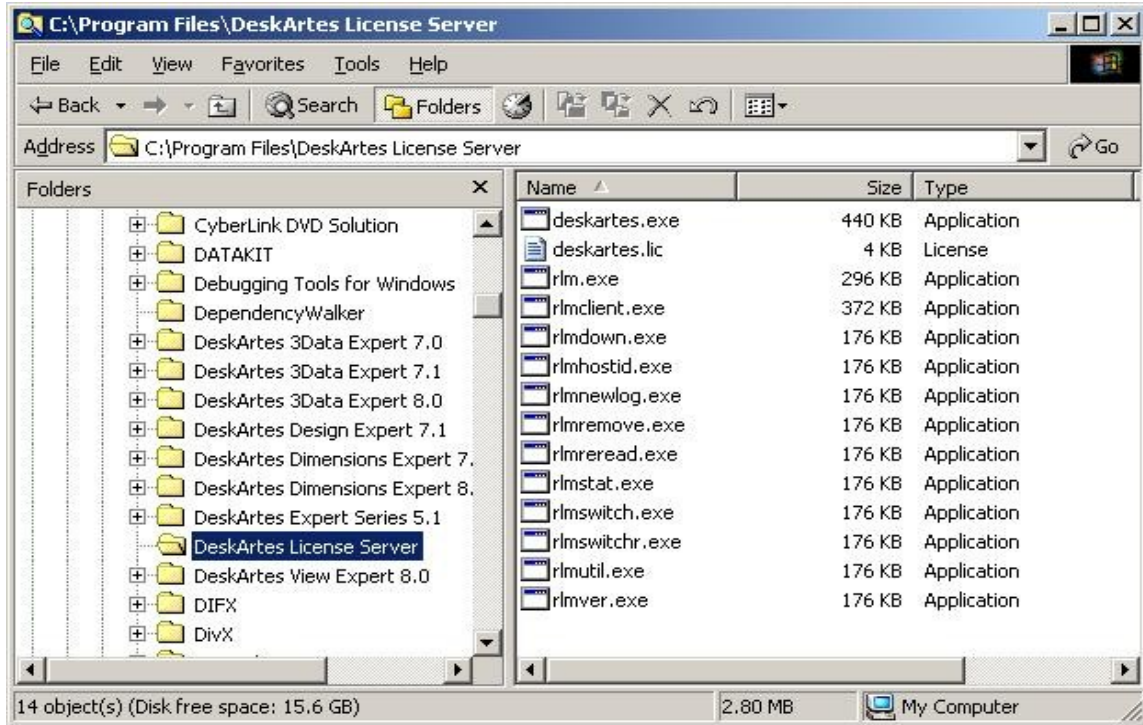
C:\Program Files\DeskArtes License Server>
```

Send the Hostid number and Hostname to DeskArtes for creating the license.

Indicate if you need a license for the Import Package too. A separate key is required, please see Import Package licenses.

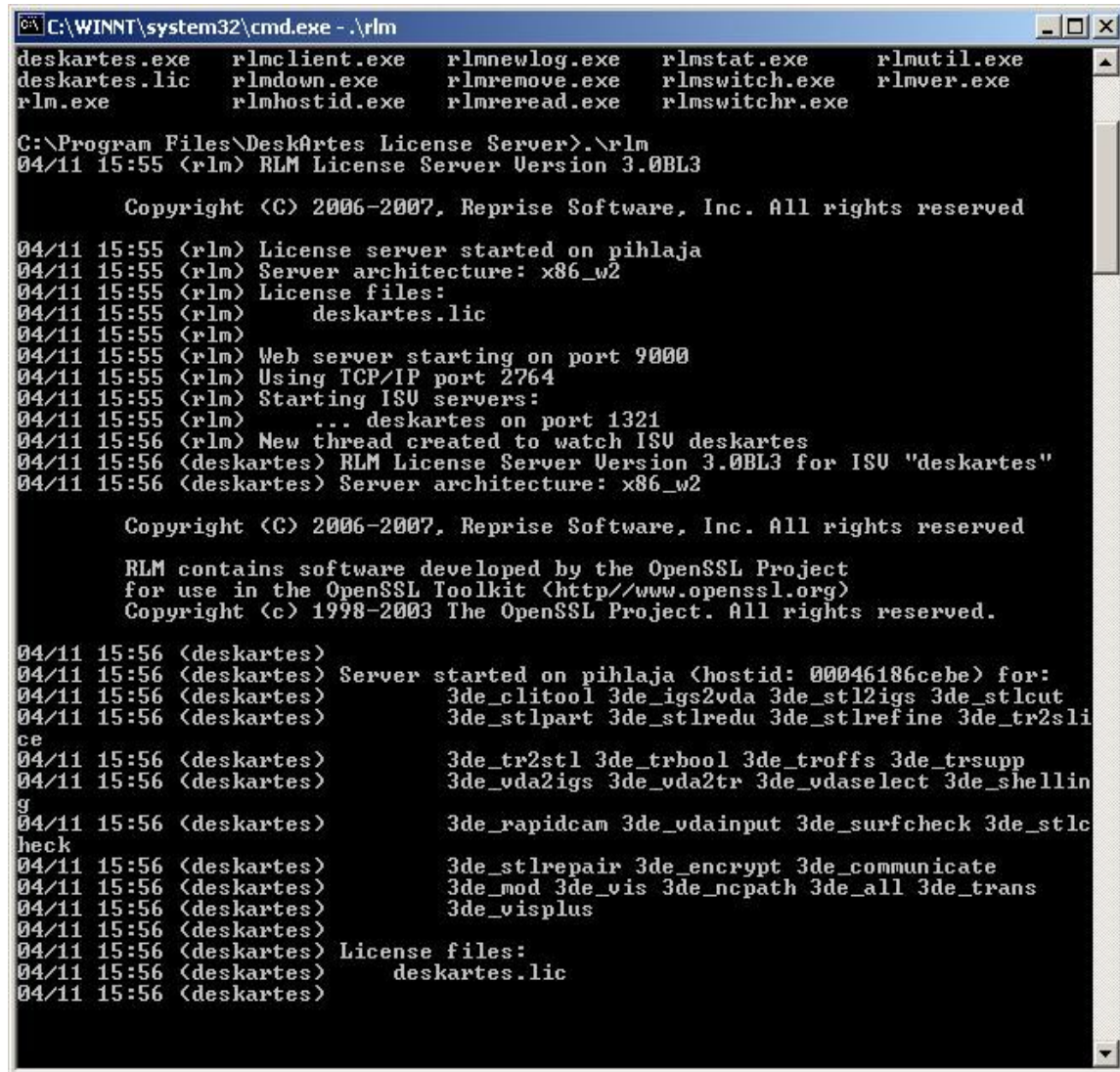
Installing the license

When you receive the license file (deskartes.lic), copy it to the license server installation directory (default: "C:\Program Files\DeskArtes License Server").



Starting the license server

Start the license server with command ".\rlm".



```
C:\WINNT\system32\cmd.exe - .\rlm
deskartes.exe  rlmclient.exe  rlmnewlog.exe  rlmstat.exe  rlmutil.exe
deskartes.lic  rlmldown.exe    rlmremove.exe  rlmswitch.exe rlmver.exe
rlm.exe        rlmhostid.exe  rlmreread.exe  rlmswitchr.exe

C:\Program Files\DeskArtes License Server>.\rlm
04/11 15:55 (rlm) RLM License Server Version 3.0BL3

    Copyright (C) 2006-2007, Reprise Software, Inc. All rights reserved

04/11 15:55 (rlm) License server started on pihlaja
04/11 15:55 (rlm) Server architecture: x86_w2
04/11 15:55 (rlm) License files:
04/11 15:55 (rlm)     deskartes.lic
04/11 15:55 (rlm)
04/11 15:55 (rlm) Web server starting on port 9000
04/11 15:55 (rlm) Using TCP/IP port 2764
04/11 15:55 (rlm) Starting ISU servers:
04/11 15:55 (rlm)     ... deskartes on port 1321
04/11 15:56 (rlm) New thread created to watch ISU deskartes
04/11 15:56 (deskartes) RLM License Server Version 3.0BL3 for ISU "deskartes"
04/11 15:56 (deskartes) Server architecture: x86_w2

    Copyright (C) 2006-2007, Reprise Software, Inc. All rights reserved

    RLM contains software developed by the OpenSSL Project
    for use in the OpenSSL Toolkit (http://www.openssl.org)
    Copyright (c) 1998-2003 The OpenSSL Project. All rights reserved.

04/11 15:56 (deskartes)
04/11 15:56 (deskartes) Server started on pihlaja (hostid: 00046186cebe) for:
04/11 15:56 (deskartes)     3de_clitool 3de_igs2vda 3de_stl2igs 3de_stlcut
04/11 15:56 (deskartes)     3de_stlpart 3de_stlredu 3de_stlrefine 3de_tr2sli
ce
04/11 15:56 (deskartes)     3de_tr2stl 3de_trbool 3de_troffs 3de_trsupp
04/11 15:56 (deskartes)     3de_vda2igs 3de_vda2tr 3de_vdaselect 3de_shellin
g
04/11 15:56 (deskartes)     3de_rapidcam 3de_vdainput 3de_surfcheck 3de_stlc
heck
04/11 15:56 (deskartes)     3de_stlrepair 3de_encrypt 3de_communicate
04/11 15:56 (deskartes)     3de_mod 3de_vis 3de_ncpath 3de_all 3de_trans
04/11 15:56 (deskartes)     3de_visplus
04/11 15:56 (deskartes) License files:
04/11 15:56 (deskartes)     deskartes.lic
04/11 15:56 (deskartes)
```

Note: You need to let the Command Prompt window exist as long as you want the license server to run. Closing the window will end the license server process. In this default configuration the license server also writes its log information to the same Command Prompt window. If you want to get the license server survive closing the Command Prompt, user logout etc. see the "Running the license server as a Windows service" section below.

Checking the license server status

The license server has an internal www-server waiting for connections at IP port 9000. So you can view the license server status information by connecting to that server with any web-browser (Internet Explorer, Firefox, Opera etc.). If running the browser at the license server machine the correct URL for the license server is

http://localhost:9000

Reprise License Server Administration
Copyright (c) 2006-2007, Reprise Software, Inc. All Rights Reserved.

Status for "rlm" on pihlaja (port 2764)

RLM software version v3.0 (build:3)
RLM comm version: v1.1

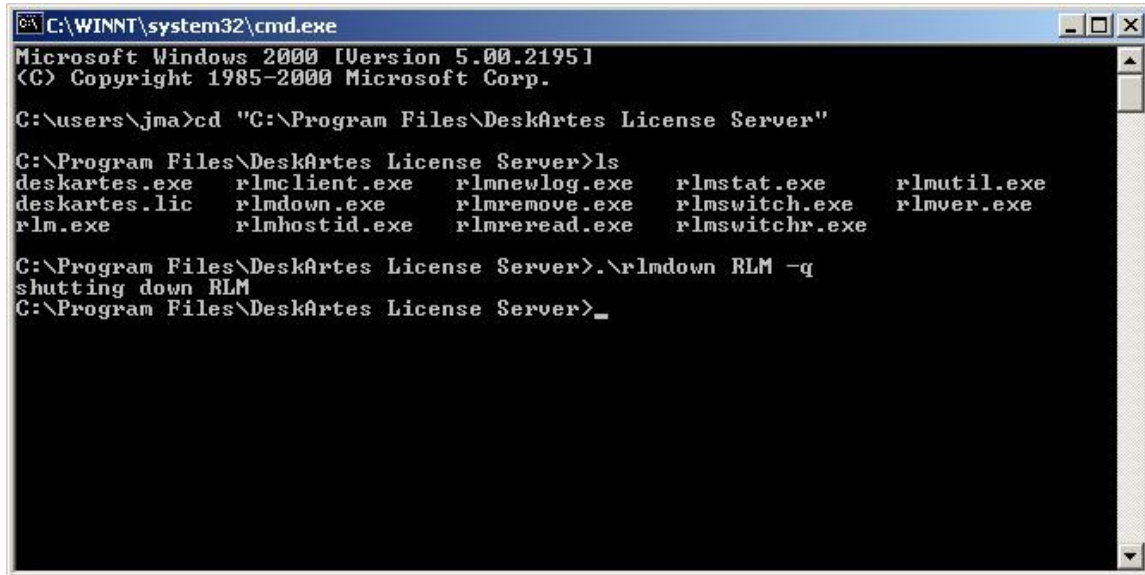
rlm Statistics	Since Start	Since Midnight	Recent
Start time	10/18 18:46:48	10/18 18:46:49	10/18 18:46:49
Messages	0 (0/sec)	0 (0/sec)	0 (0/sec)
Connections	0 (0/sec)	0 (0/sec)	0 (0/sec)

ISV Servers

Name	port	Running	Restarts	Server Status	License Status	REREAD/RESTART	SHUTDOWN
deskartes	1374	Yes	0	deskartes	deskartes	deskartes	deskartes

Shutting down the license server

To shut down the license server, run the command ".rlmdown RLM -q" in another Windows Command Prompt window.



```
C:\WINNT\system32\cmd.exe
Microsoft Windows 2000 [Version 5.00.2195]
(C) Copyright 1985-2000 Microsoft Corp.

C:\users\jma>cd "C:\Program Files\DeskArtes License Server"

C:\Program Files\DeskArtes License Server>ls
deskartes.exe  rlmclient.exe  rlmnewlog.exe  rlmstat.exe  rlmutil.exe
deskartes.lic  rlmdown.exe    rlmremove.exe  rlmswitch.exe  rlmver.exe
rlm.exe        rlmhostid.exe  rlmreread.exe  rlmswitchr.exe

C:\Program Files\DeskArtes License Server>.\rlmdown RLM -q
shutting down RLM
C:\Program Files\DeskArtes License Server>_
```

In the Command Prompt window where you started the server, you can now see also the shutdown messages.

```
C:\WINNT\system32\cmd.exe
C:\Program Files\DeskArtes License Server>.\rlm
04/11 15:55 (rlm) RLM License Server Version 3.0BL3

    Copyright (C) 2006-2007, Reprise Software, Inc. All rights reserved

04/11 15:55 (rlm) License server started on pihlaja
04/11 15:55 (rlm) Server architecture: x86_w2
04/11 15:55 (rlm) License files:
04/11 15:55 (rlm)     deskartes.lic
04/11 15:55 (rlm)
04/11 15:55 (rlm) Web server starting on port 9000
04/11 15:55 (rlm) Using TCP/IP port 2764
04/11 15:55 (rlm) Starting ISU servers:
04/11 15:55 (rlm)     ... deskartes on port 1321
04/11 15:56 (rlm) New thread created to watch ISU deskartes
04/11 15:56 (deskartes) RLM License Server Version 3.0BL3 for ISU "deskartes"
04/11 15:56 (deskartes) Server architecture: x86_w2

    Copyright (C) 2006-2007, Reprise Software, Inc. All rights reserved

    RLM contains software developed by the OpenSSL Project
    for use in the OpenSSL Toolkit (http://www.openssl.org)
    Copyright (c) 1998-2003 The OpenSSL Project. All rights reserved.

04/11 15:56 (deskartes)
04/11 15:56 (deskartes) Server started on pihlaja (hostid: 00046186cebe) for:
04/11 15:56 (deskartes)     3de_clitool 3de_igs2vda 3de_stl2igs 3de_stlcut
04/11 15:56 (deskartes)     3de_stlpart 3de_stlredu 3de_stlrefine 3de_tr2sli
ce
04/11 15:56 (deskartes)     3de_tr2stl 3de_trbool 3de_troffs 3de_trsupp
04/11 15:56 (deskartes)     3de_vda2igs 3de_vda2tr 3de_vdaselect 3de_shellin
g
04/11 15:56 (deskartes)     3de_rapidcam 3de_vdainput 3de_surfcheck 3de_stlc
heck
04/11 15:56 (deskartes)     3de_stlrepair 3de_encrypt 3de_communicate
04/11 15:56 (deskartes)     3de_mod 3de_vis 3de_ncpath 3de_all 3de_trans
04/11 15:56 (deskartes)     3de_visplus
04/11 15:56 (deskartes) License files:
04/11 15:56 (deskartes)     deskartes.lic
04/11 15:56 (deskartes)
04/11 16:09 (rlm) Shutdown request by jma@pihlaja
04/11 16:09 (rlm) Sending shutdown msg to deskartes (pid: 1768)
04/11 16:09 (deskartes) Shutdown request by jma@pihlaja
04/11 16:09 (rlm) deskartes - SHUTDOWN

C:\Program Files\DeskArtes License Server>
```

Running the license server as a Windows service

If you need to be able to get the license server to survive closing the Command Prompt, user logout etc. it is possible by defining the license server to run as a Windows service.

When running the license server through the Windows service mechanism the space characters in the directory paths cause problems. Therefore you must first create a new directory that does not have any space characters in its path (for example: "c:\reprise") and copy all the license server components from the default installation directory ("C:\Program Files\DeskArtes License Server") there. Then do the installation from that directory.

In the license file you need to change the following:

- Add the path of the vendor daemon to the ISV line of the license file.

The following changes are needed in the rlm startup command:

- Add "-install_service" option to the rlm startup command.
- Add a service name to the rlm startup command using the "-service_name" option.
- Add the full path of the log file to the rlm startup command using "-dlog" option.
- Add the full path of the license file to the rlm startup command using "-c" option.

When the "-install_service" option is included in the rlm startup command, the command does not start the license server. It just adds a new service to the Windows service list. The installed service has to be separately started via the Windows Services control panel.

The installed rlm service can also be removed from the Windows service list using the "-delete_service" option of the rlm command. The service has to be stopped via the Windows Services control panel before it can be removed.

Installing rlm as a Windows service

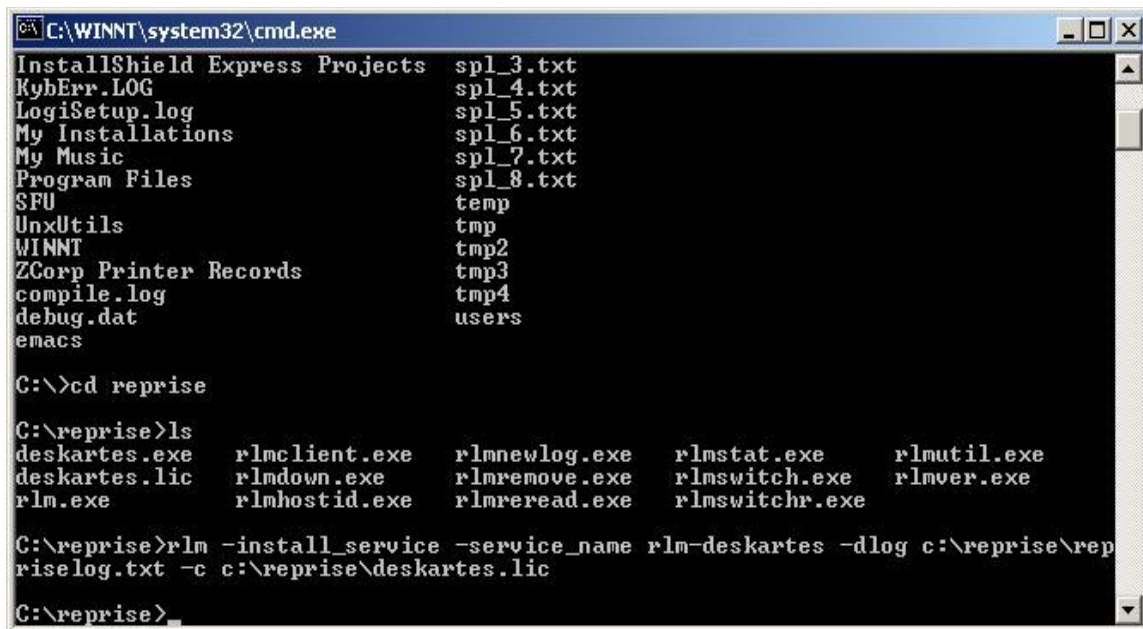
For example if you have the vendor daemon (deskartes.exe) and the license file (deskartes.lic) in the directory "c:\reprise", want the logfile (reprise.log.txt) to be written in the same directory and the service to be called "rlm-deskartes", you need to do the following:

First change the ISV line in the license file to contain the path of the vendor daemon.

```
ISV deskartes c:\reprise\deskartes
```

Then run the rlm startup command in the Windows command prompt.

```
rlm -install_service -service_name rlm-deskartes -dlog  
c:\reprise\reprise.log.txt -c c:\reprise\deskartes.lic
```



```
C:\WINNT\system32\cmd.exe
InstallShield Express Projects  spl_3.txt
KybErr.LOG                     spl_4.txt
LogiSetup.log                  spl_5.txt
My Installations               spl_6.txt
My Music                       spl_7.txt
Program Files                  spl_8.txt
SFU                             temp
UnxUtils                       tmp
WINNT                          tmp2
ZCorp Printer Records          tmp3
compile.log                    tmp4
debug.dat                      users
enacs

C:\>cd reprise

C:\reprise>ls
deskartes.exe  rlmclient.exe  rlmnewlog.exe  rlmstat.exe  rlmutil.exe
deskartes.lic  rlmdown.exe   rlmremove.exe  rlmswitch.exe  rlmver.exe
rlm.exe        rlmhostid.exe rlmreread.exe  rlmswitchr.exe

C:\reprise>rlm -install_service -service_name rlm-deskartes -dlog c:\reprise\reprise.log.txt -c c:\reprise\deskartes.lic

C:\reprise>
```

Starting rlm service

Open the Windows Services control panel. In different versions of Windows it is found in slightly different paths.

Windows Vista:

“Start->Control Panel (Classic View): Administrative Tools: Services”

Windows XP:

“Start->Control Panel: Administrative Tools: Services”

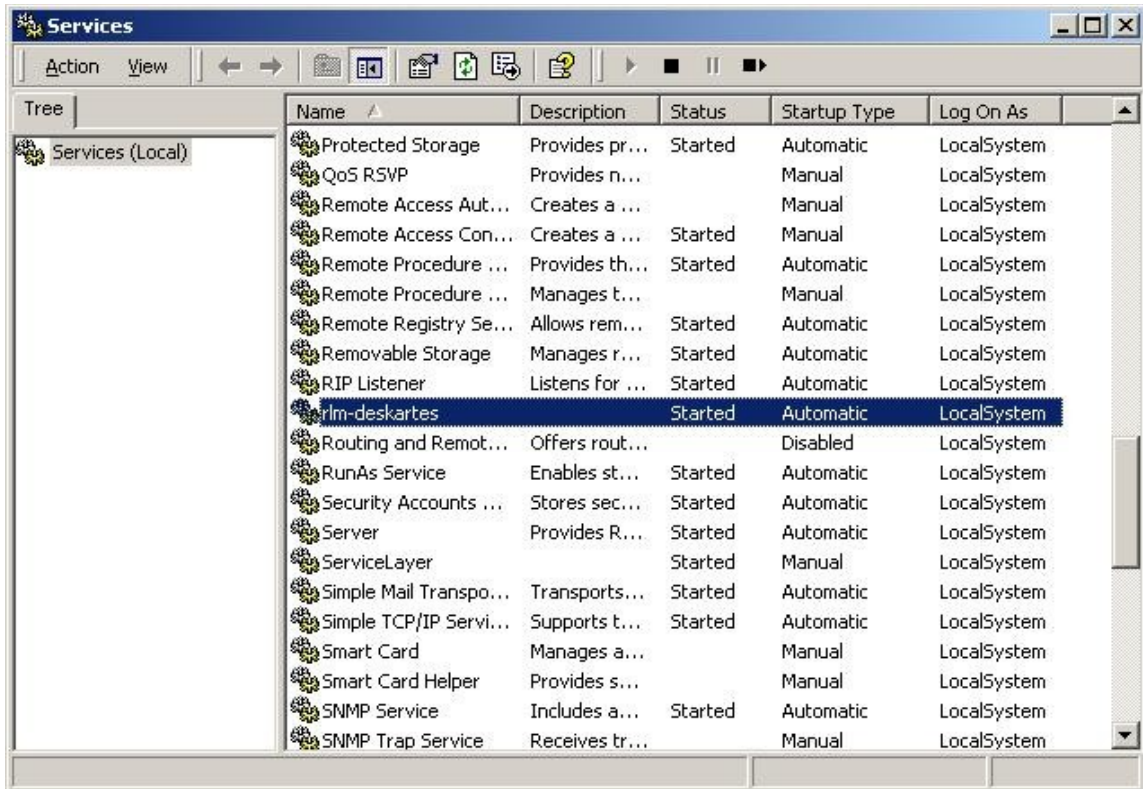
Windows 2000:

“Start->Settings->Control Panel: Administrative Tools: Services”

The “rlm-deskartes” service is now found in the list of services.

Select the “rlm-deskartes” service and run the command “Start” from the “Action” menu.

The status of the service is then changed to “Started” and the rlm license server is running.



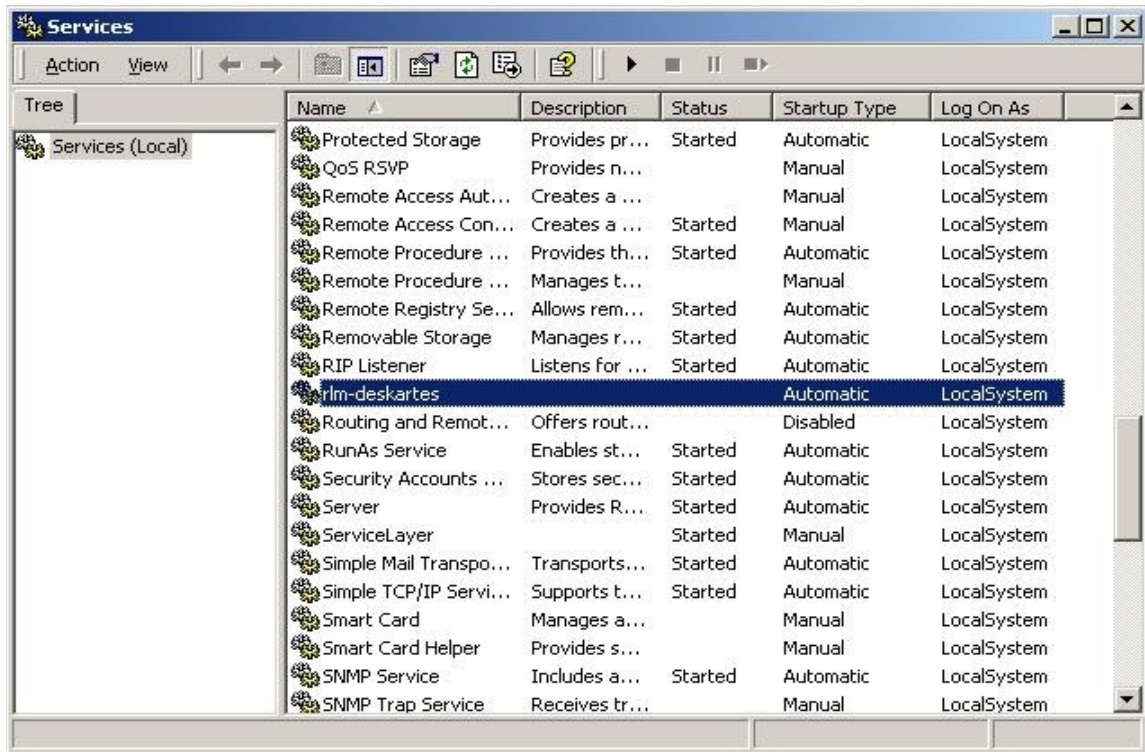
Stopping rlm service

The rlm service is stopped via the Windows Services control panel in the same way as it was started.

Open the Windows Services control panel.

Select the “rlm-deskartes” service in the list and run the command “Stop” from the “Action” menu.

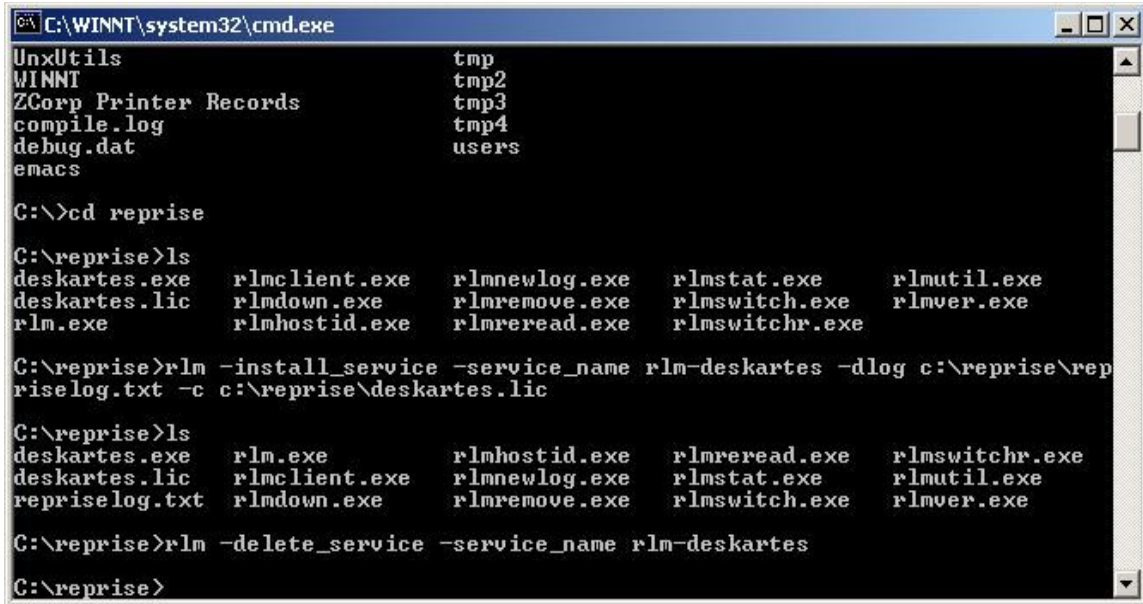
The “Started” string then disappears from the “Status” field and the rlm license server is stopped.



Deleting rlm service

To remove the rlm service from the Windows service list run the following command in the Windows command prompt.

```
rlm -delete_service -service_name rlm-deskartes
```



```
C:\WINNT\system32\cmd.exe
UnxUtils          tmp
WINNT             tmp2
ZCorp Printer Records tmp3
compile.log       tmp4
debug.dat        users
emacs

C:\>cd reprise

C:\reprise>ls
deskartes.exe    rlmclient.exe    rlmnewlog.exe    rlmstat.exe    rlmutil.exe
deskartes.lic   rlmshutdown.exe rlmremove.exe    rlmswitch.exe  rlmver.exe
rlm.exe         rlmhostid.exe    rlmreread.exe    rlmswitchr.exe

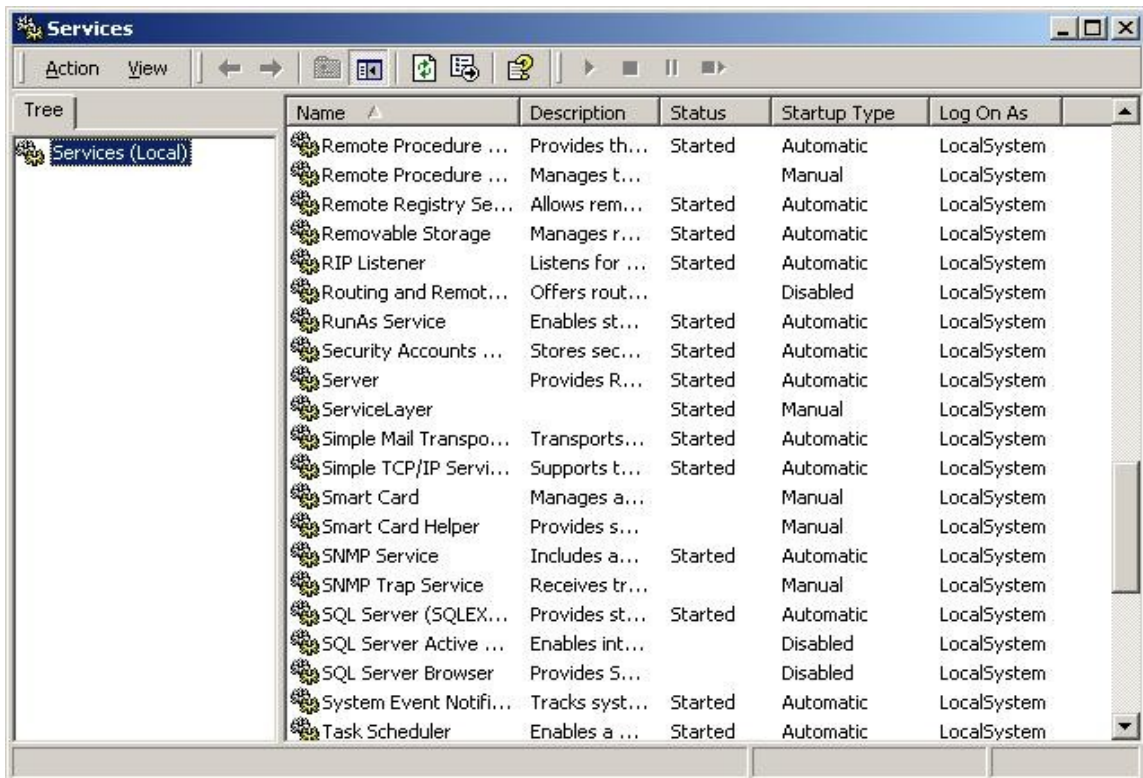
C:\reprise>rlm -install_service -service_name rlm-deskartes -dlog c:\reprise\reprise.log.txt -c c:\reprise\deskartes.lic

C:\reprise>ls
deskartes.exe    rlm.exe          rlmhostid.exe    rlmreread.exe    rlmswitchr.exe
deskartes.lic   rlmclient.exe    rlmnewlog.exe    rlmstat.exe      rlmutil.exe
reprise.log.txt rlmshutdown.exe rlmremove.exe    rlmswitch.exe    rlmver.exe

C:\reprise>rlm -delete_service -service_name rlm-deskartes

C:\reprise>
```

The “rlm-deskartes” has then disappeared from the services list in the Windows Services control panel.



The rlm license server log file

When running the rlm license server as a Windows service, it writes its log information to the file defined in the rlm startup command (for example: "c:\reprise\reprise\log.txt"). The log file contains the similar information that is shown in the startup command prompt in the default configuration.

The information in the log file is useful especially when trying to resolve problems in running the rlm license server.

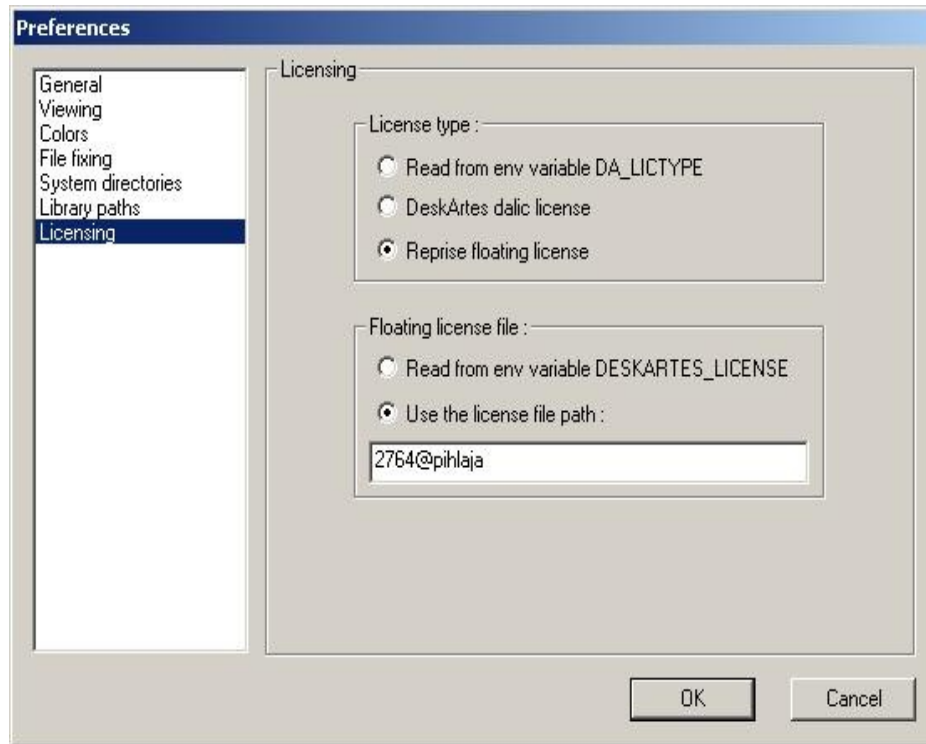
Additional information

For further details see "Running the *rlm* server as a service on Windows" in "**The License Server**" section, and the ISV line description in the "**The License File**" section, of the Reprise end user manual (http://www.reprisesoftware.com/RLM_Enduser.html).

Floating license client configuration in 3Data Expert

The license system settings can be changed in 3Data Expert by selecting the "Edit->Preferences" in the program menus.

Choose the "Licensing" category in the Preferences window.

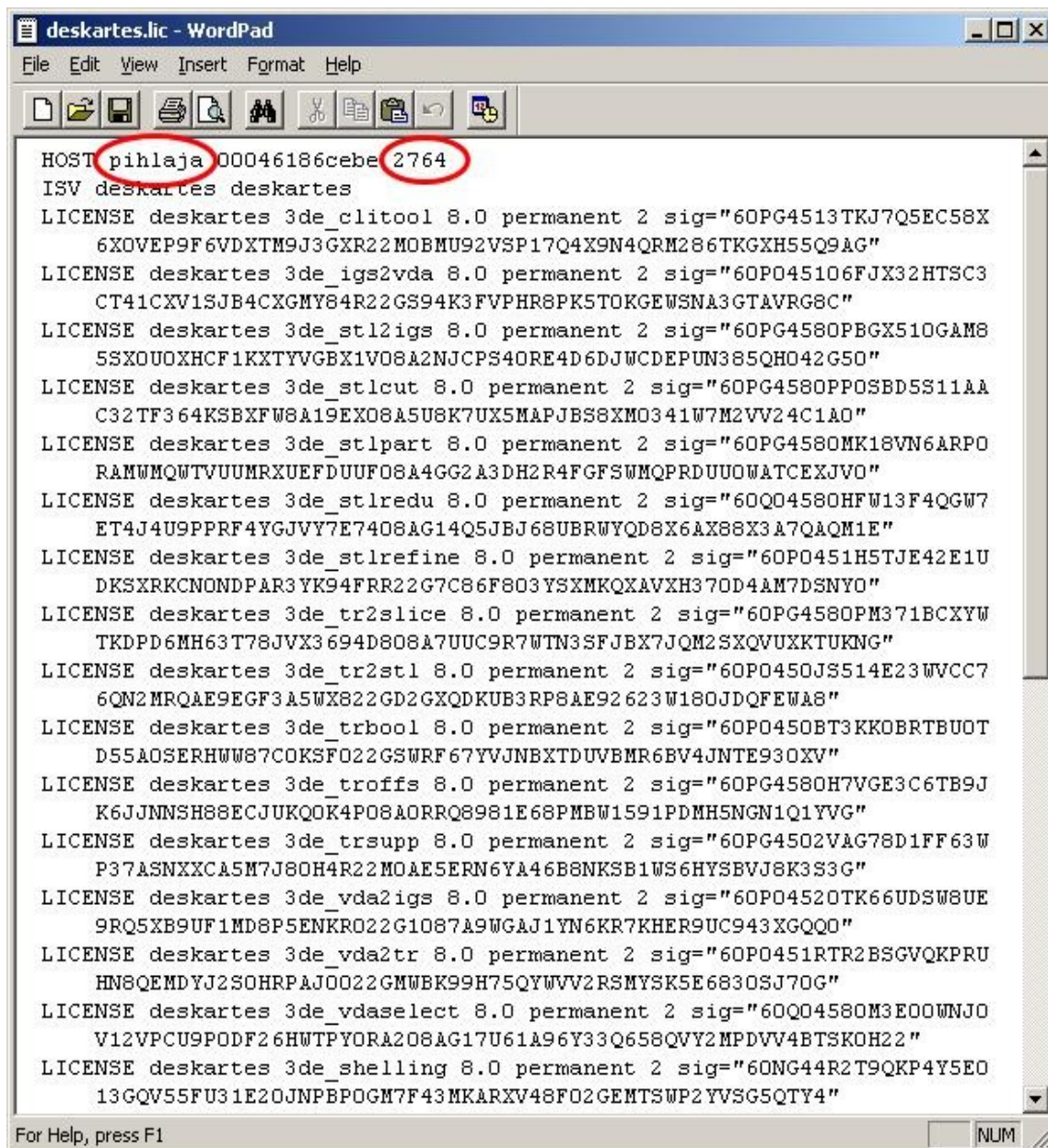


Select the "Reprise floating license" as the License type and the "Use the license file path" in the Floating license file setting.

Fill in the path to the license server in the corresponding text field.

The path is of format "<IP-port>@<lic-server-hostname>", where <IP-port> is the port number of the license server (default: 2764) and the <lic-server-hostname> is the host name of the license server machine in the network.

The correct port number and the hostname can be also checked from the HOST line of the license file (second and fourth field)



```
deskartes.lic - WordPad
File Edit View Insert Format Help
HOST pihlaja 00046186cebe 2764
ISV deskartes deskartes
LICENSE deskartes 3de_clitool 8.0 permanent 2 sig="60PG4513TKJ7Q5EC58X
6XOVEP9F6VDXTM9J3GXR22MOB MU92VSP17Q4X9N4QRM286TKGXH55Q9AG"
LICENSE deskartes 3de_igs2vda 8.0 permanent 2 sig="60P045106FJX32HTSC3
CT41CXV1SJB4CXGMY84R22GS94K3FVPHR8PK5TOKGEWSNA3GTAVRG8C"
LICENSE deskartes 3de_stl2igs 8.0 permanent 2 sig="60PG4580PBGX510GAM8
5SXOUOXHCF1KXTYVGBX1V08A2NJCP54ORE4D6DJWCDEPUN385QHO42G50"
LICENSE deskartes 3de_stlcut 8.0 permanent 2 sig="60PG4580PPOSBD5S11AA
C32TF364KSBXFW8A19EX08A5U8K7UX5MAPJBS8XMO341W7M2VV24C1A0"
LICENSE deskartes 3de_stlpart 8.0 permanent 2 sig="60PG4580MK18VN6ARPO
RAMWMQWTVUUMRXUEFDUUF08A4GG2A3DH2R4FGFSWMQPRDUUOWATCEXJVO"
LICENSE deskartes 3de_stlredu 8.0 permanent 2 sig="60Q04580HFV13F4QG7
ET4J4U9PPRF4YGVJY7E7408AG14Q5JBJ68UBRWYQD8X6AX88X3A7QAQM1E"
LICENSE deskartes 3de_stlrefine 8.0 permanent 2 sig="60P0451H5TJE42E1U
DKSXRKCNONDPAR3YK94FR22G7C86F803YSXMKQXAVXH370D4AM7DSNYO"
LICENSE deskartes 3de_tr2slice 8.0 permanent 2 sig="60PG4580PM371BCXYW
TKDPD6MH63T78JVX3694D808A7UUC9R7WTM3SFJXB7JQM2SXQVUXKTUKNG"
LICENSE deskartes 3de_tr2stl 8.0 permanent 2 sig="60P0450JSS14E23WVCC7
6QN2MRQAE9EGF3A5WX822GD2GXQDKUB3RP8AE92623W180JDQFEWA8"
LICENSE deskartes 3de_trbool 8.0 permanent 2 sig="60P0450BT3KKOBRBTBUOT
D55A0SERHW87COKSFO22GSWRF67YVJNBXTDUBV6BMR6BV4JNTE93OXV"
LICENSE deskartes 3de_troffs 8.0 permanent 2 sig="60PG4580H7VGE3C6TB9J
K6JJNNSH88ECJUKQOK4P08AORRQ8981E68PMBW1591PDMH5MGN1Q1YVG"
LICENSE deskartes 3de_trsupp 8.0 permanent 2 sig="60PG4502VAG78D1FF63W
P37ASNXXCA5M7J80H4R22MOAE5ERN6YA46B8NKSB1WS6HYSBVJ8K3S3G"
LICENSE deskartes 3de_vda2igs 8.0 permanent 2 sig="60P04520TK66UDSWSUE
9RQ5XB9UF1MD8P5ENKRO22G1087A9WGAJ1YN6KR7KHER9UC943XGQQO"
LICENSE deskartes 3de_vda2tr 8.0 permanent 2 sig="60P0451RTR2BSGVQKPRU
HN8QEMDYJ2SOHRPAJ0022GMWBK99H75QYVVV2RSMYSK5E6830SJ70G"
LICENSE deskartes 3de_vdaselect 8.0 permanent 2 sig="60Q04580M3E00WNJO
V12VPCU9PODF26HWTPYORA208AG17U61A96Y33Q658QVY2MPDVV4BTSKOH22"
LICENSE deskartes 3de_shelling 8.0 permanent 2 sig="60NG44R2T9QKP4Y5EO
13QV55FU31E20JNPBPOGM7F43MKARXV48F02GEMTSWP2YVSG5QTY4"
For Help, press F1 NUM
```

or in the license server startup messages (lines: "License server started on ..." and "Using TCP/IP port ...").

```
C:\WINNT\system32\cmd.exe - .\rlm
deskartes.exe  rlmclient.exe  rlmnewlog.exe  rlmstat.exe  rlmutil.exe
deskartes.lic  rlmldown.exe  rlmremove.exe  rlmswitch.exe  rlmver.exe
rlm.exe        rlmhostid.exe  rlmreread.exe  rlmswitchr.exe

C:\Program Files\DeskArtes License Server>.\rlm
04/11 15:55 (rlm) RLM License Server Version 3.0BL3

    Copyright (C) 2006-2007, Reprise Software, Inc. All rights reserved

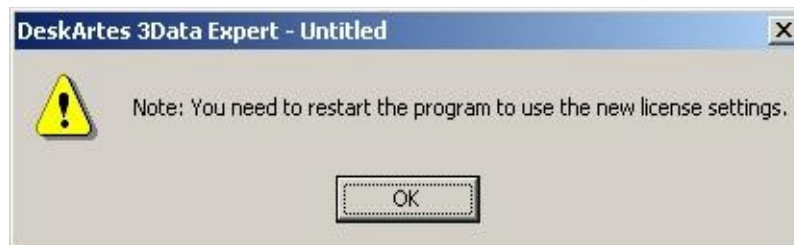
04/11 15:55 (rlm) License server started on pihlaja
04/11 15:55 (rlm) Server architecture: x86_w2
04/11 15:55 (rlm) License files:
04/11 15:55 (rlm)     deskartes.lic
04/11 15:55 (rlm)
04/11 15:55 (rlm) Web server starting on port 9000
04/11 15:55 (rlm) Using TCP/IP port 2764
04/11 15:55 (rlm) Starting ISU servers:
04/11 15:55 (rlm)     ... deskartes on port 1321
04/11 15:56 (rlm) New thread created to watch ISU deskartes
04/11 15:56 (deskartes) RLM License Server Version 3.0BL3 for ISU "deskartes"
04/11 15:56 (deskartes) Server architecture: x86_w2

    Copyright (C) 2006-2007, Reprise Software, Inc. All rights reserved

    RLM contains software developed by the OpenSSL Project
    for use in the OpenSSL Toolkit (http://www.openssl.org)
    Copyright (c) 1998-2003 The OpenSSL Project. All rights reserved.

04/11 15:56 (deskartes)
04/11 15:56 (deskartes) Server started on pihlaja (hostid: 00046186cebe) for:
04/11 15:56 (deskartes)     3de_clitool 3de_igs2vda 3de_stl2igs 3de_stlcut
04/11 15:56 (deskartes)     3de_stlpart 3de_stlredu 3de_stlrefine 3de_tr2sli
ce
04/11 15:56 (deskartes)     3de_tr2stl 3de_trbool 3de_troffs 3de_trsupp
04/11 15:56 (deskartes)     3de_vda2igs 3de_vda2tr 3de_vdaselect 3de_shellin
g
04/11 15:56 (deskartes)     3de_rapidcam 3de_vdainput 3de_surfcheck 3de_stlc
heck
04/11 15:56 (deskartes)     3de_stlrepair 3de_encrypt 3de_communicate
04/11 15:56 (deskartes)     3de_mod 3de_vis 3de_ncpath 3de_all 3de_trans
04/11 15:56 (deskartes)     3de_visplus
04/11 15:56 (deskartes) License files:
04/11 15:56 (deskartes)     deskartes.lic
04/11 15:56 (deskartes)
```

Press "OK"



When the program reminds you about need to restart the program, exit the 3Data Expert and start it again.